

DAILY CHOPS

'Salsa for Three More' (Drum Chart)

Written and performed by Tony Robinson

For a complete standard notation key visit www.tonyrobinson.co.uk/notation-key

Latin Jazz ♩ = 105

INTRO

cont. sim.

5

Optional: replace stepped hi-hat with wood block

8

Fill

A HEAD (AABA)

11

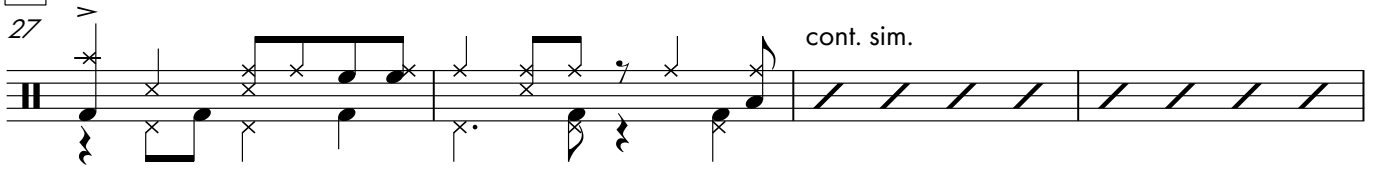
15 cont. sim.

(8)

Visit TonyRobinson.co.uk for more free drum resources!

B

27 *cont. sim.*

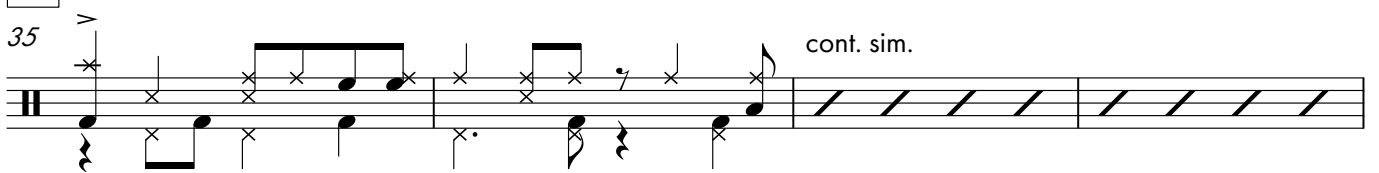


31 *Fill* (8)



A

35 *cont. sim.*

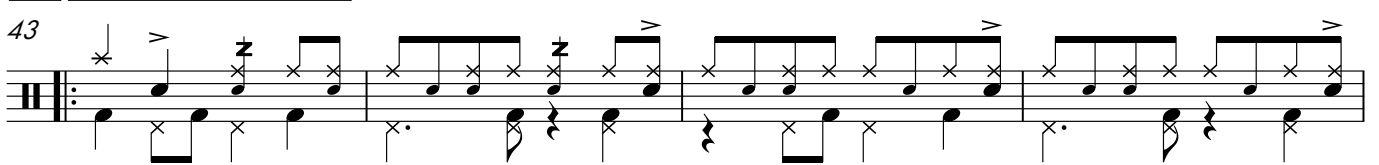


39 *To Coda* (8)



A PIANO SOLO (2 choruses)

43



47 *cont. sim.* (8)



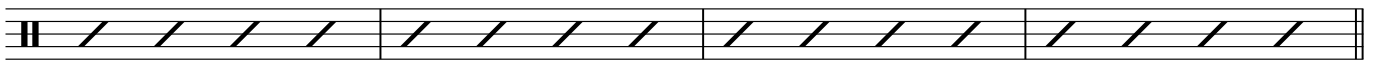
B

59



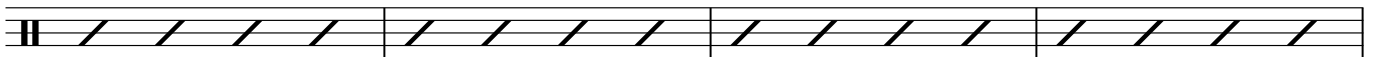
63

(8)



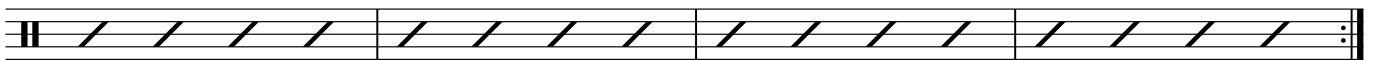
A

67

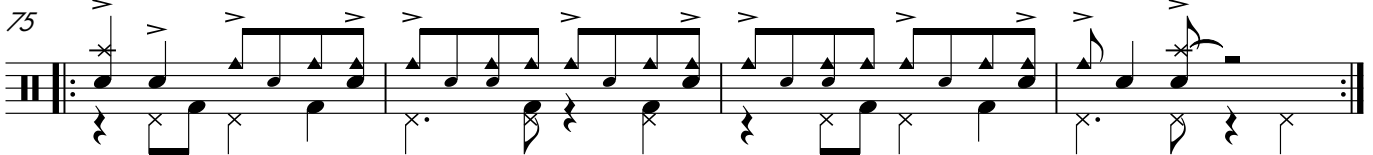


71

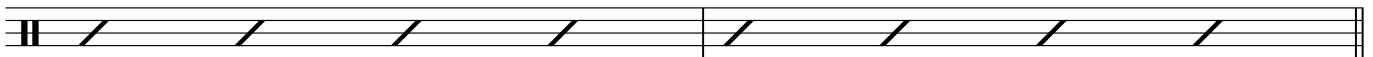
(8)



INTERLUDE



83 Fill



DRUM SOLO OVER MONTUNO

85

Play 4x

Musical notation for measures 85-90, featuring a drum solo over a Montuno accompaniment. The notation includes a treble clef, a key signature of one flat, and a 3/4 time signature. The drum part is indicated by 'x' marks on a staff, and the Montuno part is indicated by rhythmic stems and flags.

(Montuno cont.)

D.S. al Coda (with repeats)

101

Play 4x, ad lib

Musical notation for measures 101-110, continuing the Montuno accompaniment. The notation includes a treble clef, a key signature of one flat, and a 3/4 time signature. The drum part is indicated by 'x' marks, and the Montuno part is indicated by rhythmic stems and flags.

OUTRO

117

Coda

Musical notation for measures 117-120, the Coda section. The notation includes a treble clef, a key signature of one flat, and a 3/4 time signature. The drum part is indicated by 'x' marks, and the Montuno part is indicated by rhythmic stems and flags.

120

Solo fill

Musical notation for measures 120-123, the Solo fill section. The notation includes a treble clef, a key signature of one flat, and a 3/4 time signature. The drum part is indicated by 'x' marks, and the Montuno part is indicated by rhythmic stems and flags.